

Ball Bearings Baleros del Rodamiento Roulements à Billes	106
Mast Bearings Rodamientos para Mástiles Roulements de Mat	115
Needle Bearings Rodamientos de Agujas Roulement à Aiguilles	134
Taper Rollers Rodamientos Cónicos Rouleaux Coniques	127
Thrust Bearings Rodamientos de Empuje Roulements Butées	114



Ball Bearings Baleros del Rodamiento Roulements à Billes

Shielded on one side, the other side open	Z
Shielded on both sides	ZZ
Sealed on one side, the other side open	RS1 or 1RS
Sealed on both sides	RS2 or 2RS
Sealed on one side, shielded on the other side	RS1/Z
Clearance	C3
Special grease type	WT or GJN
Groove and ring	NR




Standard

	Industry #	Description	I.D." ▼	O.D."	Width"
SY385031	SFR188-ZZ	Double shield flanged	0.2500	0.5000	0.1875
SY385029	99R4	Double seal	0.2500	0.6250	0.1960
SY23553	R4A-ZZ	Double seal	0.2500	0.7500	0.2813
SY937565	S1PP	Ball bearing double seal	0.2500	0.7500	0.2813
SY51291	1605-ZZ	Double shield	0.3125	0.9063	0.3125
SY28-102720	1604-2RS	Double seal	0.3750	0.8750	0.3438
SY385040	5491-V	Flanged	0.5000	1.1250	0.3850
SY385066	1621-2RS	Double seal	0.5000	1.3750	0.4375
SY51292	1623-2RS	Double seal	0.6250	1.3750	0.4375
SY385019	99R10	Double seal	0.6250	1.3750	0.3390
SY385020	99502H	Double seal	0.6250	1.3750	0.4375
SY37771	6202-2RS-16	Double seal	0.6290	1.3770	0.4330
SY940496	RF122214PP	Double seal flanged	0.7500	1.5000	0.5000
SY385017	R12-2RS	Double seal	0.7500	1.6250	0.4375
SY99154	1635-2RS	Double seal	0.7500	1.7500	0.5000
SY385032	1635-ZZ	Double shield	0.7500	1.7500	0.5000
SY48701	6204-2RS-12	Double seal	0.7500	1.8500	0.5510
SY385018	AS204-012	Double seal	0.7500	1.8500	0.9842
SY1237169	R14	Ball bearing	0.8750	1.8750	0.5000
SY385022	9R16SS	Double seal	1.0000	2.0000	0.5000
SY385024	R16-2RS	Double seal	1.0000	2.0000	0.5000
SY385039	ASF-100-1	Flanged	1.0000	2.0000	0.6300
SY385073	RMS8	Open	1.0000	2.5000	0.7500
SY1237189	RLS-12	Open	1.5000	3.2500	0.7500
SY385054	8507 8/07-132	Single seal	2.8750	1.3720	0.7920
SY86786	11122001	Drive unit assembly	12.0000	12.9920	0.5090


Metric

	Industry #	Description	I.D. mm ▼	O.D. mm	Width mm
SY385036	626-ZZ	Double shield	6	19	6
SY1237202	608-2RS	Double seal	8	22	7
SY1237175	608-ZZ	Double shield	8	22	7
SY47638	SC8A37LH1	Double seal	8	23	14
SY57204	629-RS2	Double seal	9	26	8
SY1237163	6000-2RS	Double seal	10	26	8

 CA PROP 65 WARNING: Cancer/Reproductive Harm www.p65warnings.ca.gov

Ball Bearings **Baleros del Rodamiento** Roulements à Billes


Metric	Industry #	Description	I.D. mm ▼	O.D. mm	Width mm
SY1237174	6200-RS2	Double shield	10	30	9
SY38894	6200-RS2	Double seal	10	30	9
SY384990	6200	Open	10	30	9
SY385053	6200RS	Single seal	10	30	9
SY937607	6901-2RS	Double seal	12	24	6
SY1237160	620-1RS	Single seal	12	32	10
SY29947	6201-2RS	Double seal	12	32	10
SY384988	6201-ZZ	Double shield	12	32	10
SY384989	6201	Open	12	32	10
SY44029	6301-RS2	Double seal	12	37	12
SY47469	88013	Double seal	13	32	10
SY30891	6002-RS2	Double seal	15	32	9
SY385003	6002-ZZ	Double shield	15	32	9
SY385044	16002	Open	15	32	8
SY27042	6002	Open	15	32	9
SY52014	6202-2RS	Double seal	15	35	11
SY385065	6202-RS2-C3	Double seal	15	35	11
SY47467	6202-ZZ	Double shield	15	35	11
SY47470	630-2RS-2	Double seal	15	42	13
SY384967	6302-RS1	Single seal	15	42	13
SY1237151	6903RS	Single seal	17	30	7
SY101434	6003-RS2	Double seal	17	35	10
SY385002	6003-ZZ	Double shield	17	35	10
SY1237183	6203-2RS-H/C3GJN	Double seal	17	40	12
SY384987	6203-RS2-C3	Double seal	17	40	12
SY43391	6203-ZZ	Double shield	17	40	12
SY47456	6203	Open	17	40	12
SY44640	6203-Z	Single shield	17	40	12
SY940687	6203-2RS-12	Double seal	17	40	12
SY1237187	6303-ZZ-V	Double shield	17	47	14
SY940493	6303	Open	17	47	14
SY1237185	6303RS	Single seal	17	47	14
SY47628	6303-2RS	Double seal	17	47	14
SY43393	6303-2RS-C3	Double seal	17	47	14
SY385028	6303-2RS-V14/17S-S	Double seal	17	47	14
SY385038	6303-ZZ	Double shield	17	47	14
SY385033	6303-ZZ-V	Double shield	17	47	14
SY47464	8603	Single seal	17	47	16
SY1237178	6904-RS2	Double seal	20	37	9
SY33345	6904-ZZ	Double shield	20	37	9
SY385005	ACS0404	Caged with race	20	41	11
SY385000	6004-RS2	Double seal	20	42	12
SY385001	6004-2RS-C3	Double seal	20	42	12
SY52714	6004-ZZ	Double shield	20	42	12
SY940494	6004	Open	20	42	12

 **CA PROP 65 WARNING:** Cancer/Reproductive Harm www.p65warnings.ca.gov

Ball Bearings **Baleros del Rodamiento** Roulements à Billes

Metric


	Industry #	Description	I.D. mm ▼	O.D. mm	Width mm
SY47472	6004RS	Single seal	20	42	12
SY40730	6004-Z	Single shield	20	42	12
SY1237153	204PP4	Double seal	20	47	14
SY43392	6204-2RS	Double seal	20	47	14
SY43370	6204-RS2-NR	Double seal	20	47	14
SY47471	6304-2RS	Double seal	20	47	14
SY385035	5204-ZZ	Double shield	20	47	21
SY25163	6204-ZZ	Double shield	20	47	14
SY385070	6204-ZZ-C3	Double shield	20	47	14
SY385050	1204	Open	20	47	14
SY384985	6204	Open	20	47	14
SY28029	6304	Open	20	47	14
SY385052	6204RS	Single seal	20	47	14
SY43401	6304-RS1	Single seal	20	47	14
SY33106	6204-Z	Single shield	20	47	14
SY47462	6304-Z	Single shield	20	47	14
SY1237181	6304-RS2-C3NR	Double seal with groove and ring	20	52	15
SY1237176	6304-ZZ-C3	Double shield	20	52	15
SY43372	6304-2RS-1NR	Double seal	20	52	15
SY83192	6304-ZZ	Double shield	20	52	15
SY385046	5304	Open	20	52	22
SY1244477	6304-2RS	Double seal	20	52	15
SY83508	613RS	Single seal	22	36	10
SY1237197	60/22-2RS	Double seal	22	44	12
SY51839	63/22-2RS	Double seal	22	56	16
SY385047	63/22	Open	22	56	16
SY385061	6805-RS2	Double seal	25	37	7
SY1237188	61905	Open	25	42	9
SY384953	6905-2RS	Double seal	25	42	9
SY23673	6005-RS2	Double seal	25	47	12
SY44955	6005-ZZ	Double shield	25	47	12
SY384999	6005	Open	25	47	12
SY1237171	6205-RS2-C3	Double seal	25	52	15
SY1237192	6205-RS2-C3-GJN	Single seal	25	52	15
SY47459	5205	Double row	25	52	21
SY35212	MUB5205UM	Double row	25	52	21
SY25309	566030	Double row angle contact	25	52	37
SY385008	5205-ZZ	Double row double seal	25	52	21
SY40449	5205-Z	Double row seal	25	52	21
SY53904	5205-2RS	Double seal	25	52	21
SYM5263	6205-RS2-C3	Double seal	25	52	15
SY385030	6205-2RS-C3	Double seal	25	52	15
SY384983	6205-RS2-INOX	Double seal	25	52	15
SY43371	6205-RS2-NR	Double seal	25	52	15
SY104291	6205-2RS	Double seal	25	52	15

 **CA PROP 65 WARNING:** Cancer/Reproductive Harm www.p65warnings.ca.gov

Ball Bearings **Baleros del Rodamiento** Roulements à Billes/Billes

Metric


	Industry #	Description	I.D. mm ▼	O.D. mm	Width mm
SY384984	6205-2RS-PM	Double seal	25	52	15
SY47468	6205-ZZ	Double shield	25	52	15
SY940619	6205-ZZ-C3	Double shield	25	52	15
SY41780	6205	Open	25	52	15
SY41904	6205-NR	Open	25	52	15
SY385045	7205B	Open angle contact	25	52	15
SY385063	87505	Shield/seal	25	52	16
SY47465	6205RS	Single seal	25	52	15
SY384982	8505	Single seal	25	52	15
SY104926	6205-Z	Single shield	25	52	15
SY940612	6205-Z BULK	Single shield	25	52	15
SY75171	8505/18-Z	Single shield	25	52	15
SY940611	8505/18-Z BULK	Single shield	25	52	15
SY385058	8505-Z	Single shield	25	52	15
SY940613	6205-2RS Stainless	Double seal	25	52	15
SY940614	6205-ZZ BULK	Double shield	25	52	15
SY940615	6205- BULK	Open	25	52	15
SY385007	5305-2RS	Double row double seal	25	62	25
SY385013	5305-ZZ	Double row double shield	25	62	25
SY50888	6305-RS2	Double seal	25	62	17
SY940720	6305-2RS BULK	Double seal	25	62	17
SY385071	6305-ZZ	Double shield	25	62	17
SY385068	6305-ZZ-C3-WT	Double shield	25	62	17
SY384965	6305	Open	25	62	17
SY385069	8605	Open	25	62	21
SY30661	87605	Seal and shield	25	62	21
SY384964	6305RS	Single seal	25	62	17
SY47463	6305-Z	Single shield	25	62	17
SY940616	6305-Z BULK	Single shield	25	62	17
SY384954	6405	Open	25	80	21
SY384969	63/28	Open	28	68	18
SY1237162	61906	Open	30	47	9
SY1237190	6006-RS2-C3	Double seal	30	55	13
SY75138	5006	Double row	30	55	23
SY384998	6006-RS2	Double seal	30	55	13
SY384997	6006-RS2-NR	Double seal snr	30	55	13
SY43399	6006	Open	30	55	13
SY47374	6006RS	Single seal	30	55	13
SY43398	6006-Z	Single shield	30	55	13
SY940689	6006-ZZ	Double shield	30	55	13
SY1237168	5206-RS-2C3	Double row double seal	30	62	23
SY1237156	5206-Z	Double row single shield	30	62	23
SY940686	5206-ZZ	Double shield	30	62	23
SY1237159	206KDD	Double shield	30	62	16
SY940599	6206-ZZ	Double shield	30	62	16

 **CA PROP 65 WARNING:** Cancer/Reproductive Harm www.p65warnings.ca.gov

Ball Bearings **Baleros del Rodamiento** Roulements à Billes

Metric


	Industry #	Description	I.D. mm ▼	O.D. mm	Width mm
SY1237180	6206-ZZ-C3	Double shield	30	62	16
SY1237199	6206-ZZ-C3-WT	Double shield	30	62	16
SY1237177	6206-C3	Open	30	62	16
SY1237170	6206Z-C3	Single shield	30	62	16
SY385009	4206	Double row	30	62	20
SY43381	5206	Double row	30	62	24
SY385060	5206-NR	Double row	30	62	24
SY54908	5206-2RS	Double row double seal	30	62	24
SY385006	5206W-2RS	Double row wide	30	62	29
SY107735	6206-RS2-C3	Double seal	30	62	16
SY41497	6206-NR	Open snap ring	30	62	16
SY25906	62062RS-Z	Shield seal	30	62	16
SY385051	87506	Shield seal	30	62	20
SY105462	6206-Z	Single shield	30	62	16
SY42354	6206	Open	30	62	16
SY385011	5306	Double row	30	72	30
SY45032	5306-ZZ	Double row	30	72	30
SY937582	6306-2RS C3	Double seal	30	72	19
SY40004	6306-2RS	Double seal	30	72	19
SY47473	6306-ZZ	Double shield	30	72	19
SY384963	6306-C3	Open	30	72	19
SY47466	6306-NR	Open	30	72	19
SY384961	6306-Z	Single shield	30	72	19
SY385057	6306-Z-C3	Single shield	30	72	19
SY47458	6306	Open	30	72	19
SY41332	BL306-75	Open	30	75	19
SY1237173	6307- RS2-C3	Double seal	30	80	21
SY385004	60/32	Open	32	58	13
SY384968	63/32-C3	Open	32	75	20
SY385014	5206YRI-IYD	Double row	33	62	24
SY41714	61907-C3	Open	35	55	10
SY1237157	6007-2RS-C3	Double seal	35	62	14
SY937571	6007	Open	35	62	14
SY45474	6007-RS2	Double seal	35	62	14
SY384996	6007-2RS-NR-C3	Double seal snr	35	62	14
SY385048	16007-C3	Open	35	62	9
SY47454	6007-C3	Open	35	62	14
SY937575	6007-ZZ JEM	Double shield	35	62	14
SY1237179	207KXN4	Open	35	72	19
SY45690	5207FFH	Double row	35	72	27
SY78483	5207-NR	Double row	35	72	27
SY43394	6207-2RS	Double seal	35	72	17
SY385027	6207-2RS-C3	Double seal	35	72	17
SY52148	6207-ZZ	Double shield	35	72	17
SY41355	6207	Open	35	72	17

 **CA PROP 65 WARNING:** Cancer/Reproductive Harm www.p65warnings.ca.gov

Ball Bearings **Baleros del Rodamiento** Roulements à Billes/Billes

Metric


	Industry #	Description	I.D. mm ▼	O.D. mm	Width mm
SY384980	6207-C3	Open	35	72	17
SY384979	6207-NR	Open snap ring	35	72	17
SY47972	6207-1RS	Single seal	35	72	17
SY42209	87507	Single seal	35	72	17
SY937573	6207Z	Single shield	35	72	17
SY45154	MGV-207-2RS	Double seal	35	72	20
SY51975	5207	Open	35	72	27
SY23563	6307W	Double row	35	80	35
SY45473	5307-2RS	Double row double seal	35	80	35
SY43403	6307-RS2-C3	Double seal	35	80	21
SY24309	6307-ZZ	Double shield	35	80	21
SY384958	6307-ZZ-C3	Double shield	35	80	21
SY43405	6307	Open	35	80	21
SY41413	6307-NR	Open	35	80	21
SY384960	6307RS	Single seal	35	80	21
SY43404	6307-Z	Single shield	35	80	21
SY1237198	W 6734	Open	38	68	14
SY81216	JRM3939/JRM3968XD	Double row	39	68	37
SY1237191	BAHB311396B	Double row	39	72	37
SY77754	88128R	Double seal	39	80	28
SY1237152	6008-2RS	Double seal	40	68	15
SY1237166	6008-RS2-C3	Double seal	40	68	15
SY1237158	6008-Z	Single shield	40	68	15
SY41393	6008-C3	Open	40	68	15
SY385042	7008B	Open	40	68	15
SY385055	6008RS	Single seal	40	68	15
SY41465	6008-Z-C3	Single shield	40	68	15
SY1244478	6008	Open	40	68	15
SY1237165	6208-ZZ-C3	Double shield	40	80	18
SY1237203	6208-Z-NR	Double shield	40	80	18
SY1237204	6208-Z-C3	Single shield	40	80	18
SY385012	5208-NR	Double row	40	80	30
SY384977	6208-2RS-C3	Double seal	40	80	18
SY937568	5208-2RS	Double row angular contact ball bearing	40	80	30
SY47457	6208	Open	40	80	18
SY385074	6208-NR	Open with groove/ring	40	80	18
SY385021	208	Roller cylindrical	40	80	18
SY44641	6208-Z	Single shield	40	80	18
SY47455	BL208ZN	Single shield	40	80	18
SY46727	5308VFFA	Angular contact	40	90	37
SY45009	6308-2RS-C3	Double seal	40	90	23
SY384957	6308-RS2	Double seal	40	90	23
SY384956	6308-ZZ	Double shield	40	90	23
SY41351	BL308-ZZ-NR	Double shield	40	90	23

 CA PROP 65 WARNING: Cancer/Reproductive Harm www.p65warnings.ca.gov

Ball Bearings **Baleros del Rodamiento** Roulements à Billes

Metric


	Industry #	Description	I.D. mm ▼	O.D. mm	Width mm
SY39098	308-C3	Open	40	90	23
SY83379	6308-NR	Open groove/ring	40	90	23
SY1237200	6408-NR	Open with groove/ring	40	110	27
SY385015	CR0822	Double row	42	72	38
SY384994	6009-RS2	Double seal	45	75	16
SY38470	6009Z-C3	Double shield	45	75	16
SY42244	6009	Open	45	75	16
SY41357	6209-2RS	Double seal	45	85	19
SY107721	6209-ZZ	Double shield	45	85	19
SY43396	6209	Open	45	85	19
SY384976	6209-C3	Open	45	85	19
SY42214	6209-NR	Open	45	85	19
SY41632	3209	Open double row	45	85	30
SY43395	6209-Z-C3	Single shield	45	85	19
SY27721	6309-2RS-C3	Double seal	45	100	25
SY31210	6309RS	Double seal	45	100	25
SY385034	6309-ZZ-C3-HT	Double shield	45	100	25
SY107538	6309	Open	45	100	25
SY45848	6309-NR-C3	Open	45	100	25
SY385043	309-NR	Open with groove/ring	45	107	25
SY1237193	16010	Open	50	80	10
SY34464	6010-C3	Open	50	80	16
SY937584	6208-ZD C3	Single shield	50	80	18
SY23680	6010-2RS	Double seal	50	80	16
SY39485	5210-ZZ	Double row angle contact	50	90	30
SY384975	6210-2RS-C3	Double seal	50	90	20
SY384974	6210-ZZ	Double seal	50	90	20
SY41353	6210	Open	50	90	20
SY40735	7210B	Open angle contact	50	90	20
SY42206	6210-Z	Single shield	50	90	20
SY1237194	211	Open	50	100	21
SY107539	6310	Open	50	110	27
SY41686	310NA-C3-L	Open with groove/ring	50	110	27
SY385049	RLS16	Open	51	102	21
SY1237167	6911-2RS	Double seal	55	80	13
SY384993	6011-C3	Open	55	90	18
SY1237154	6211	Open	55	100	21
SY32204	6211-Z-2	Double shield	55	100	21
SY34216	621-1RS	Single seal	55	100	21
SY385056	211ZN	Single shield with groove	55	100	21
SY940688	5211-ZZ	Double shield	55	100	33
SY1237161	311-NR	Open with groove/ring	55	120	29
SY384952	6912-C3	Open	60	85	13
SY43400	6012-RS2	Double seal	60	95	18
SY78485	6212-2RS-C3	Double seal	60	110	22

 **CA PROP 65 WARNING:** Cancer/Reproductive Harm www.p65warnings.ca.gov

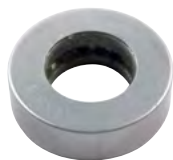
Ball Bearings **Baleros del Rodamiento** Roulements à Billes/Billes

Metric

	Industry #	Description	I.D. mm ▼	O.D. mm	Width mm
SY43397	6212	Open	60	110	22
SY38974	212-Z	Single shield	60	110	22
SY384955	6312-C3	Open	60	130	31
SY384992	6013-RS2	Double seal	65	100	18
SY40507	6013	Open	65	100	18
SY384971	6213-RS2	Double seal	65	120	23
SY384972	6213	Open	65	120	23
SY46997	6014	Open	70	110	20
SY1237195	6314	Open	70	150	35
SY940499	5314SC3	Open	70	150	63
SY1237186	6215	Open	75	130	25
SY54026	6215-ZZ	Double shield	75	130	25
SY384970	6216	Open	80	140	26
SY78484	6020-2RS-C3	Double seal	100	150	24
SY385067	6022-2RS	Double seal	110	170	28

 CA PROP 65 WARNING: Cancer/Reproductive Harm www.p65warnings.ca.gov

Thrust Bearings Rodamientos de Empuje Roulements Butées



	I.D. mm ▼	O.D. mm	Width mm
SY1220312	12.80	23.30	3.60
SY47388	19.40	41.50	13.00
SY385124	20.00	54.00	7.50
SY37820	20.00	54.00	8.00
SY385094	20.30	33.80	9.30
SY40532	21.00	42.00	13.50
SY126282	22.30	36.20	2.00
SY940713	22.50	38.40	11.00
SY47389	22.60	48.20	15.10
SY385145	25.00	43.50	12.00
SY385122	25.20	41.70	2.00
SY48148	25.30	48.40	16.20
SY29934	25.40	39.50	8.30
SY385084	25.40	55.50	45.90
SY47390	25.80	50.70	15.70
SY40536	27.00	51.00	16.00
SY107715	28.00	51.60	15.80
SY23635	28.00	51.60	16.00
SY71778	28.00	56.00	15.90
SY51977	28.10	53.00	16.30
SY47391	29.36	55.56	15.87
SY385108	30.00	51.50	17.00
SY48147	30.00	54.00	17.50
SY42183	31.80	66.80	19.10
SY47392	32.00	55.50	16.00
SY385139	32.40	57.00	17.00
SY385104	35.00	52.80	2.80
SY385097	35.00	55.00	16.00
SY385118	35.00	65.00	18.50
SY385119	35.00	67.00	18.30
SY47394	35.30	58.80	16.00
SY47393	35.30	66.80	19.10
SY47305	35.40	64.70	19.00
SY385111	38.00	67.00	15.80

	I.D. mm ▼	O.D. mm	Width mm
SY46800	38.10	55.00	5.00
SY38448	38.10	55.56	1.98
SY385090	38.10	59.40	3.80
SY46802	38.30	55.00	3.17
SY42172	38.30	73.00	22.00
SY385146	40.00	70.00	20.00
SY71767	40.00	72.00	20.00
SY39400	40.30	70.20	20.00
SY36229	44.50	77.90	19.20
SY42203	44.50	83.00	24.00
SY51976	45.00	73.00	16.00
SY51747	45.00	76.60	22.70
SY52847	45.00	77.00	19.00
SY385114	50.50	95.50	31.70
SY44244	50.80	93.90	20.70
SY82486	51.00	93.50	27.30
SY30803	51.20	74.70	15.80
SY51748	52.00	94.00	20.00
SY40254	52.50	90.50	20.50
SY385081	54.00	73.00	2.00
SY36230	54.00	89.00	22.20
SY75089	55.00	81.80	16.00
SY385153	55.00	87.50	19.50
SY385148	55.00	92.00	26.00
SY52878	57.40	79.00	3.20
SY38453	57.60	96.60	20.40
SY385079	63.60	82.00	2.00
SY385088	76.20	133.40	35.00
SY52200	80.00	105.00	19.00
SY940640	96.43	127.00	17.46
SY40737	98.00	127.00	17.50
SY43408	148.00	177.50	17.20
SY940492	313.00	400.00	30.00

⚠ CA PROP 65 WARNING: Cancer/Reproductive Harm www.p65warnings.ca.gov

Mast Bearings Rodamientos para Mástiles Roulements de Mat

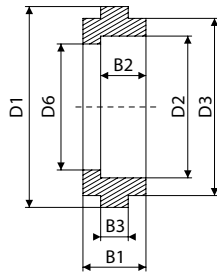


*Measurements in mm

*Medidas en mm

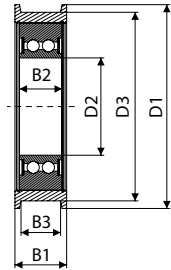
*Mesures en mm

CHA02 ▼



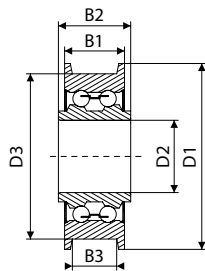
	B1	B2	B3	D1	D2	D3	D6	TY-GL
SY40945	25.40	25.40	15.80	82.00	22.00	38.00		B
SY40955	25.00	25.40	18.30	82.00	22.00	38.00		B

CHA03 ▼



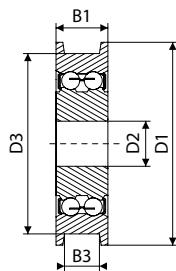
	B1	B2	B3	D1	D2	D3
SY385177	30.00	21.00	20.00	91.00	35.00	82.00
SY33911	50.50	20.00	30.00	99.00	35.00	86.00
SY385161	29.00	21.00	22.00	132.00	35.00	120.00
SY385167	52.20	35.00	36.70	107.00	38.00	91.00
SY385160	34.60	25.00	28.50	95.00	40.00	85.00
SY385172	33.10	23.00		108.00	40.00	
SY34475	52.00	30.00	42.00	135.00	40.00	122.00
SY385179	38.50	25.00	31.30	123.00	45.00	110.00
SY385175	47.00	40.00	37.00	146.00	55.00	130.00
SY385176	64.40	40.00	51.00	178.00	75.00	160.00

CHA04 ▼



	B1	B2	B3	D1	D2	D3
SY44115	47.00	49.00	32.50	108.00	36.00	90.00

CHA05 ▼

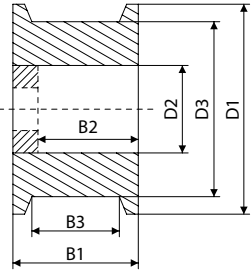


	B1	B3	D1	D2	D3
SY41915	44.70	35.00	155.00	45.00	140.00

⚠ CA PROP 65 WARNING: Cancer/Reproductive Harm www.p65warnings.ca.gov

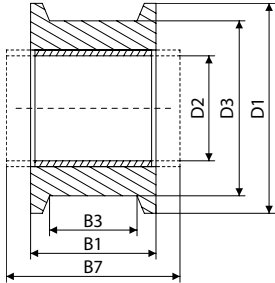
Mast Bearings Rodamientos para Mástiles Roulements de Mat

CHA06 ▼



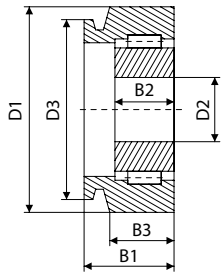
	B1	B2	B3	D1	D2	D3
SY385197	36.25	36.25	26.00	114.00	28.00	95.00
SY385198	56.00	56.00	46.50	114.00	35.00	95.00
SY385193	44.50	44.50	32.50	115.00	80.00	102.00

CHA07 ▼



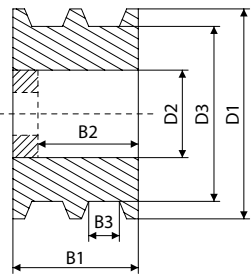
	B1	B3	B7	D1	D2	D3	TY-GL
SY385207	32.00	21.00	32.00	114.00	25.00	98.00	B
SY385207	32.30	21.00	32.00	114.00	25.00	98.00	
SY385206	29.00	21.50	25.00	63.00	37.00	55.00	B
SY385208	50.00	42.00	40.00	118.00	50.00	95.00	B

CHA09 ▼



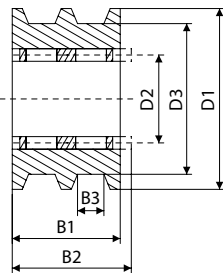
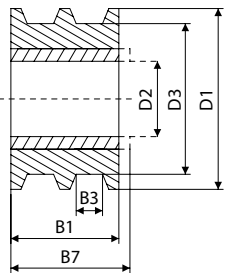
	B1	B2	B3	D1	D2	D3
SY385210	37.00	21.00	23.50	110.00	45.00	98.00

CHA11 ▼



	B1	B2	B3	D1	D2	D3
SY33951	110.00	110.00	42.00	131.00	80.00	122.00
SY385215	137.00	137.00	52.00	150.00	90.00	139.00

CHA12 ▼

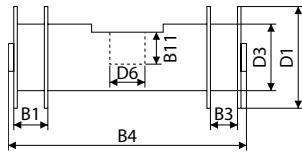


	B1	B2	B3	D1	D2	D3	TY-GL
SY34858	71.00	73.00	25.00	108.00	35.00	95.00	L

⚠ CA PROP 65 WARNING: Cancer/Reproductive Harm www.p65warnings.ca.gov

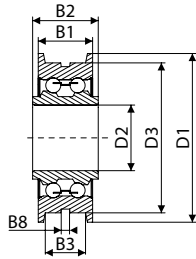
Mast Bearings Rodamientos para Mástiles Roulements de Mat

CHA14 ▼



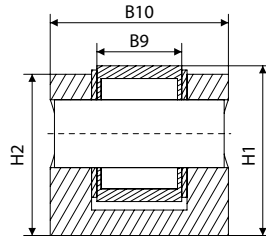
	B1	B3	B4	B11	D1	D3	D6
SY99-01446	23.00	16.00	159.00	21.00	67.00	44.00	26.00

COM00 ▼



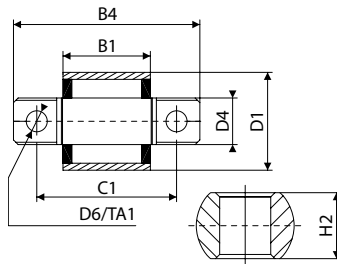
	B1	B4	B5	D1	D4	D5
SY385219	23.00	44.00	7.70	70.00	35.00	48.00

COM09 ▼



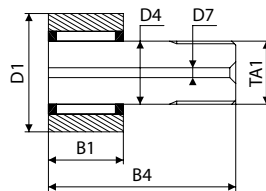
	B9	B10	H1	H2
SY36129	20.00	42.00	40.00	38.00
SY36131	23.50	45.50	47.00	44.00
SY36128	25.00	51.85	53.00	51.00
SY385230		68.00		61.00

RAS01 ▼



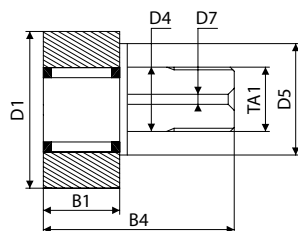
	B1	B4	D1	D4	D6	H2	C1	TA1
SY385239	27.80	82.00	60.00	24.00	13.00	14.00	62.00	
SY48311	30.00	70.50	41.00	21.00	9.00	13.00	55.00	
SY1244491	30.00	80.00	58.00	19.75	12.50	12.00	60.00	
SY385233	30.00	84.00	52.00	25.00			60.00	M10
SY385235	30.00	90.00	80.00	42.00		31.00	60.00	M10
SY385237	30.00	80.00	54.00	25.00	13.00	16.00	60.00	

RAS03 ▼



	B1	B4	D1	D4	D5	D7	TA1
SY43546	11.00	31.00	17.40	6.00	12.00		1/4 UNF
SY385241	12.60	36.00	22.20	10.00			3/8 UNF
SY24835	15.80	42.10	25.40	11.00		5.00	7/16 UNF
SY77663	44.50	121.00	76.15	32.00			1 1/4 UNF
SY385248	35.00	98.40	88.40	30.00	51.00		M30
SY385246	51.00	115.00	100.00	50.00	60.00	7.00	

RAS04 ▼

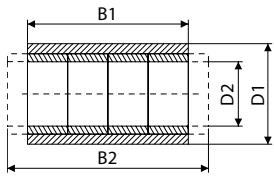


	B1	B4	D1	D4	D5	D7	TA1
SY385249	28.00	80.10	72.00	36.00	46.00	8.00	M24

⚠ CA PROP 65 WARNING: Cancer/Reproductive Harm www.p65warnings.ca.gov

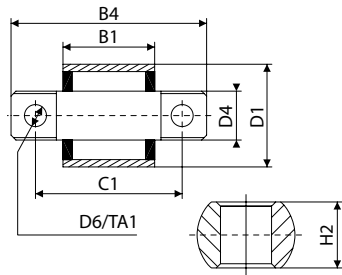
Mast Bearings Rodamientos para Mástiles Roulements de Mat

RAS06 ▼



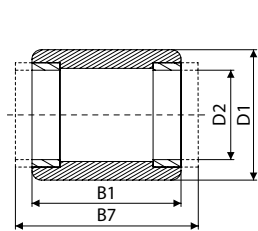
	B1	B2	D1	D2
SY385253	25.40	25.40	41.30	19.00
SY41906	26.00		66.00	28.50
SY43746	28.75	21.00	73.00	35.00
SY385252	50.00	50.00	100.00	55.00

RAS08 ▼



	B1	B4	D1	D4	D6	H2	C1	TA1
SY107933	36.00	80.30	42.00	20.00		20.00	60.00	M10
SY40194	37.50	80.00	42.00	20.00	10.00	20.00	60.00	
SY385272	38.00	84.00	52.00	25.00		25.00	60.00	M10
SY385273	42.20	88.00	58.00	31.00	11.00	27.00	64.00	

RAS10 ▼

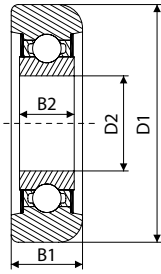


	B1	B7	B11	D1	D2	D6	TY-GL
SY99-00079	100.00			32.00	16.00		B

⚠ CA PROP 65 WARNING: Cancer/Reproductive Harm www.p65warnings.ca.gov

Mast Bearings Rodamientos para Mástiles Roulements de Mat

ROL01 ▼

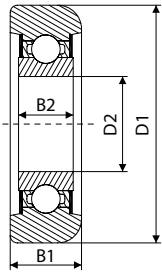


	B1	B2	D1	D2
SY385311	20.20	17.50	43.90	19.00
SY71899	21.00	15.00	65.00	25.00
SY24303	25.40	16.85	76.20	25.00
SY51916	23.50	17.00	79.50	25.00
SY385285	22.00	21.50	70.00	30.00
SY385310	28.00	19.00	77.50	30.00
SY71107	29.00	16.50	81.00	30.00
SY81144	31.20	20.00	82.00	35.00
SY45077	31.10	20.00	82.20	35.00
SY44868	31.20	20.00	92.30	35.00
SY51936	27.90	20.90	93.30	35.00
SY82318	28.00	21.00	94.50	35.00
SY385352	25.00	21.00	95.70	35.00
SY48290	28.00	21.00	97.00	35.00
SY385284	28.00	21.00	98.00	35.00
SY385295	28.60	20.80	101.20	35.00
SY47797	28.50	21.00	101.30	35.00
SY48283	28.00	21.00	101.90	35.00
SY48284	28.00	21.00	102.50	35.00
SY71895	25.00	21.00	107.50	35.00
SY385320	31.00	21.30	107.85	35.00
SY23102	30.00	20.00	111.50	35.00
SY1244490	30.00	20.00	111.50	35.00
SY385313	24.00	24.00	78.00	40.00
SY385330	29.00	29.00	89.90	40.00
SY1244489	29.00	28.80	89.90	40.00
SY385291	28.50	21.00	95.75	40.00
SY385331	27.00	23.00	101.00	40.00
SY44112	31.00	23.00	108.50	40.00
SY385351	32.00	23.00	108.50	40.00
SY107734	31.00	23.00	109.50	40.00
SY51933	32.00	23.00	109.75	40.00
SY1244488	32.50	21.50	111.15	40.00
SY1244484	32.20	21.60	111.60	40.00
SY44968	32.20	21.60	112.00	40.00
SY41442	31.80	23.00	114.00	40.00
SY48285	32.00	23.00	115.00	40.00
SY385322	30.00	23.20	115.30	40.00
SY1244486	32.00	23.00	115.50	40.00
SY48286	32.00	23.50	116.00	40.00

⚠ CA PROP 65 WARNING: Cancer/Reproductive Harm www.p65warnings.ca.gov

Mast Bearings Rodamientos para Mástiles Roulements de Mat

ROL01 ▼

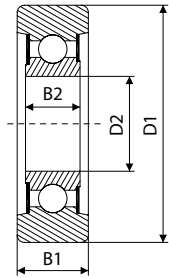


	B1	B2	D1	D2
SY385321	33.00	23.00	118.00	40.00
SY1220277	28.00	23.00	119.70	40.00
SY940723	28.00	23.00	120.50	40.00
SY385355	28.00	23.00	120.50	40.00
SY385286	34.00	34.00	105.50	45.00
SY385328	33.90	33.90	105.75	45.00
SY385287	33.90	33.50	105.80	45.00
SY385329	34.00	34.00	106.00	45.00
SY385333	30.00	25.00	116.00	45.00
SY107720	30.00	25.00	117.00	45.00
SY1244483	32.00	25.00	117.00	45.00
SY107723	32.00	25.00	118.00	45.00
SY107756	40.00	25.00	118.00	45.00
SY385336	31.90	25.00	120.00	45.00
SY385282	36.00	25.00	120.70	45.00
SY51930	34.00	25.00	124.50	45.00
SY47798	30.00	25.00	127.00	45.00
SY385312	34.20	29.00	123.00	50.00
SY107711	33.90	27.00	129.00	50.00
SY385337	34.00	27.00	130.00	50.00
SY385289	30.30	25.00	132.60	50.50
SY385364	34.00	25.20	119.50	55.00
SY40925	38.00	29.00	152.50	55.00
SY48296	45.00	29.00	164.50	55.00
SY385338	36.00	31.00	149.00	60.00
SY107759	45.00	31.00	149.60	60.00
SY107758	35.90	31.00	150.00	60.00
SY385341	45.00	31.00	150.50	60.00
SY385315	68.00	56.90	185.40	60.00
SY385343	36.00	32.00	115.00	65.00
SY385326	42.00	34.00	135.50	65.00
SY385327	42.00	34.00	136.00	65.00
SY107936	35.00	25.00	114.00	
SY51931	34.00	25.00	114.50	
SY51954	34.00	29.50	114.50	
SY48288	34.00	25.00	115.00	
SY39590	35.00	25.00	115.00	
SY385332	35.00	25.00	116.00	
SY385334	40.00	25.00	117.00	
SY48295	35.00		129.50	
SY48294	35.00		130.00	
SY385335	40.00	27.00	131.00	
SY385325	42.00	33.80	135.10	
SY51938	45.00	29.00	149.50	
SY385314	68.00	55.00	185.50	60.00
SY940714	30.00	25.00	127.00	45.00

⚠ CA PROP 65 WARNING: Cancer/Reproductive Harm www.p65warnings.ca.gov

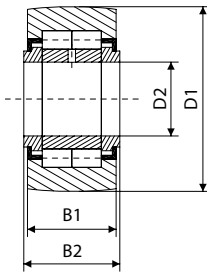
Mast Bearings Rodamientos para Mástiles Roulements de Mat

ROL02 ▼



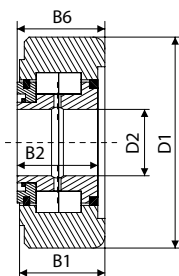
	B1	B2	D1	D2
SY71903	21.00	17.00	71.00	25.00
SY71926	28.00	28.00	72.00	25.00
SY1244485	22.00	17.00	80.00	25.00
SY107724	25.50	25.50	69.00	30.00
SY126011	21.90	16.90	90.00	30.00
SY52119	27.00	17.00	82.00	35.00
SY385369	25.50	22.00	75.70	40.00
SY26060	28.30	19.00	101.15	45.00
SY126014	34.00	25.00	120.00	54.90
SY126010	33.00	33.00	96.10	55.00
SY385373	35.00	21.00	113.00	55.00
SY126013	45.00	33.00	151.00	55.00
SY385372	46.00	46.00	189.00	55.00
SY52535	31.00	22.00	128.00	60.00
SY39157	54.00	36.50	189.40	60.00
SY385395	29.00	25.00	119.00	
SY385393	29.00	25.40	119.70	
SY385392	29.00	25.00	120.00	
SY53940	31.00	21.00	126.50	
SY385387	31.50	30.00	126.90	
SY385390	45.00	29.00	151.45	
SY385391	45.00	29.00	151.85	

ROL04 ▼



	B1	B2	D1	D2
SY56983	25.30	27.00	47.60	12.70
SY126024	24.00	25.00	47.00	20.00
SY126023	28.00	29.00	72.00	35.00

ROL05 ▼

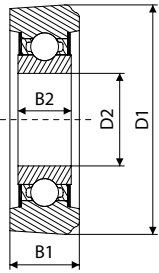


	B1	B2	B6	D1	D2
SY52755	25.00	24.10	30.80	57.00	19.00
SY41607	16.50	14.90	18.80	57.00	20.00
SY41542	18.50	15.00	20.85	57.00	20.00

⚠ CA PROP 65 WARNING: Cancer/Reproductive Harm www.p65warnings.ca.gov

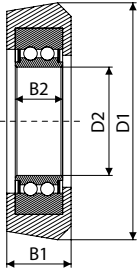
Mast Bearings Rodamientos para Mástiles Roulements de Mat

ROL07 ▼



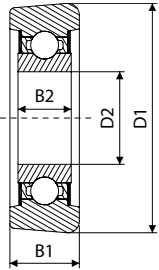
	B1	B2	D1	D2
SY25891	30.00	20.00	100.30	34.90
SY47788	31.70	21.00	91.30	35.00
SY36261	38.30	25.00	125.50	45.00

ROL08 ▼



	B1	B2	D1	D2
SY126038	26.00	16.00	69.50	24.00
SY51300	25.00	20.00	80.80	30.00
SY107725	25.00	20.00	81.10	30.00
SY126041	23.00	21.30	78.30	35.00
SY47475	43.00	30.10	103.00	40.00
SY47474	44.50	30.30	103.70	40.00
SY36260	25.00	18.00	125.40	40.00
SY44870	43.00	30.00	103.50	
SY44871	43.00	30.00	126.80	
SY46176	45.00	30.00	127.00	
SY51301	25.50	19.30	105.50	40.00

ROL09 ▼

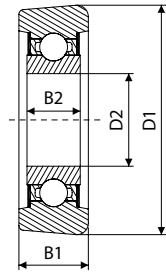


	B1	B2	D1	D2
SY126056	26.00	21.00	75.70	28.00
SY126067	24.00	21.00	78.00	28.00
SY126059	24.00	21.00	79.50	28.00
SY126045	24.00	24.00	78.00	30.00
SY126046	24.00	24.00	79.00	30.00
SY126047	30.00	20.00	89.00	33.00
SY126070	25.00	21.00	95.50	34.70
SY126048	33.00	29.00	88.50	35.00
SY126051	30.00	17.00	89.00	35.00
SY44733	32.00	21.00	91.40	35.00
SY126058	32.00	20.00	93.50	35.00
SY107718	27.00	23.00	99.00	40.00
SY126064	27.00	23.00	102.00	40.00
SY45355	43.00	30.00	103.50	40.00
SY80688	40.90	30.00	104.30	40.00
SY34460	41.00	30.00	105.00	40.00
SY126072	28.00	23.00	118.30	40.00
SY126074	28.00	23.00	120.10	40.00
SY45231	43.00	30.00	126.70	40.00
SY57943	43.00	30.00	127.40	40.00
SY126066	30.00	25.00	113.85	45.00

⚠ CA PROP 65 WARNING: Cancer/Reproductive Harm www.p65warnings.ca.gov

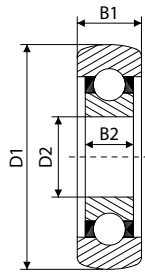
Mast Bearings Rodamientos para Mástiles Roulements de Mat

ROL09 ▼



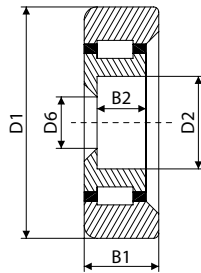
	B1	B2	D1	D2
SY126065	30.00	25.00	115.00	45.00
SY126057	32.00	25.00	128.00	45.00
SY126079	35.00	21.00	113.50	54.80
SY23063	43.00	30.20	126.70	
SY940497	28.00	20.00	100.50	35.00

ROL10 ▼



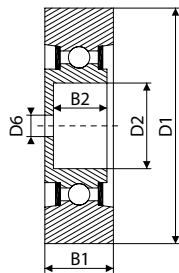
	B1	B2	D1	D2
SY107732	34.60	25.00	127.00	
SY126089	43.00	30.00	164.00	
SY44746	52.00	46.80	188.00	
SY126082	25.50	16.00	91.00	40.00
SY39891	40.00	27.00	130.00	50.00
SY126094	40.00	27.00	131.00	50.00
SY38987	43.00	43.00	164.00	50.00
SY44650	48.00	39.00	136.85	55.00
SY23338	48.00	39.00	159.20	55.00
SY126084	48.00	48.00	189.00	60.00
SY126093	34.00	30.00	129.20	75.00
SY126096	52.00	34.00	205.00	100.00
SY126097	28.00	21.00	98.00	

ROL11 ▼



	B1	B2	D1	D2	D6
SY1220251	27.00	14.40	77.50	28.00	14.00
SY1244512	32.00	26.60	88.50	35.00	25.40
SY126102	28.80	15.30	88.30	33.00	16.00

ROL12 ▼

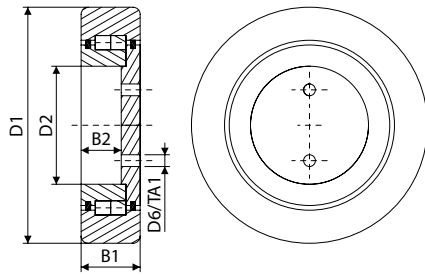


	B1	B2	D1	D2	D6
SY51917	28.00	20.40	94.50	35.00	6.00
SY51932	38.00	24.60	124.50	45.00	21.00
SY126103	38.00	25.00	125.00	45.00	20.00

⚠ CA PROP 65 WARNING: Cancer/Reproductive Harm www.p65warnings.ca.gov

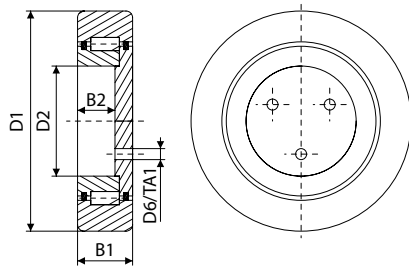
Mast Bearings Rodamientos para Mástiles Roulements de Mat

ROL16 ▼



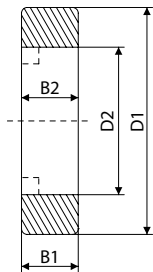
	B1	B2	D1	D2	D6	TA1
SY126113	21.90	16.00	105.70	40.00		M10

ROL17 ▼



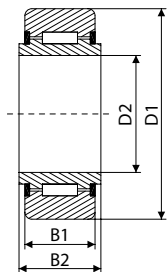
	B1	B2	D1	D2	D6
SY126114	30.00	26.20	89.00	50.00	6.00

ROL18 ▼



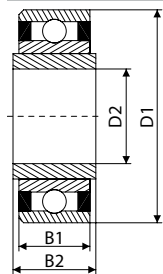
	B1	B2	D1	D2	TY-GL
SY126121	20.65	19.00	61.00		B
SY39100	23.00	14.10	73.00		B
SY126134	50.00	50.00	50.00	25.00	B
SY36232	20.50	16.00	73.00	28.60	B
SY126128	28.70	21.00	73.00	35.00	B
SY44612	44.50	44.50	101.50	50.90	B

ROL19 ▼



	B1	B2	D1	D2
SY45726	31.70	33.30	50.80	15.90
SY51953	18.00	19.50	62.00	25.00
SY940716	38.50	39.50	115.70	55.00
SY126143	27.00	28.00	115.50	60.00
SY126141	30.00	32.00	90.00	

ROL21 ▼

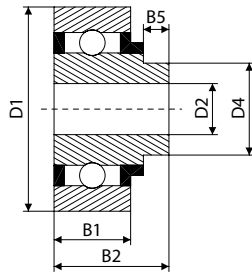


	B1	B2	D1	D2
SY126147	31.20	31.50	127.50	77.50

⚠ CA PROP 65 WARNING: Cancer/Reproductive Harm www.p65warnings.ca.gov

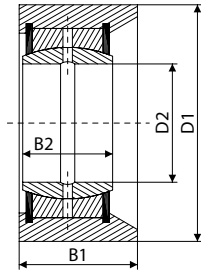
Mast Bearings Rodamientos para Mástiles Roulements de Mat

ROL22 ▼



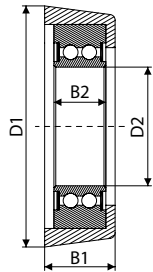
	B1	B2	B5	D1	D2	D4
SY126150	16.00	23.50	7.50	61.85	30.00	56.00
SY126149	18.00	24.00	3.80	52.00	13.00	17.00
SY47340	20.60	26.50	4.70	57.00	13.00	21.00
SY126148	25.00	33.70	6.70	73.00	17.00	24.00

ROL24 ▼



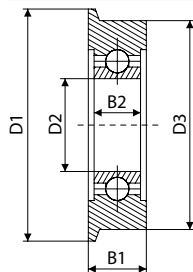
	B1	B2	D1	D2
SY34865	51.00	35.00	100.00	50.00

ROL27 ▼



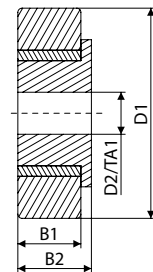
	B1	B2	D1	D2
SY126168	29.50	17.00	93.50	
SY126167	30.00	29.00	89.10	45.00

ROL28 ▼



	B1	B2	D1	D2	D3	TY-GL
SY108325	46.00	46.00	56.40	25.30	53.00	B

ROL29 ▼

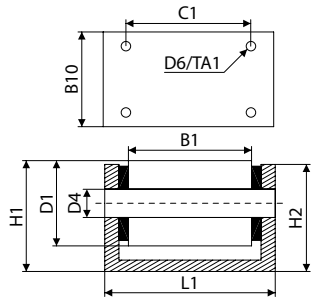


	B1	B2	D1	D2
SY42216	20.60	20.00	57.15	19.00
SY42218	25.40	25.00	82.50	31.80

⚠ CA PROP 65 WARNING: Cancer/Reproductive Harm www.p65warnings.ca.gov

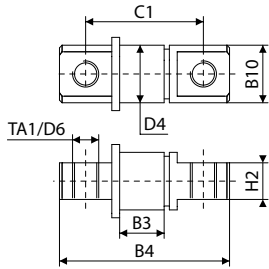
Mast Bearings Rodamientos para Mástiles Roulements de Mat

S02 ▼



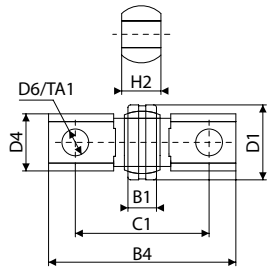
	B1	B10	D1	D4	L1	H1	H2	C1	TA1
SY126171	126.00	99.00	111.20	57.00	192.00	144.00	144.00	163.00	5/8 UNF

S03 ▼



	B3	B4	B10	D4	D6	H2	C1	TA1
SY126179	15.00	71.00	23.00	25.00	11.00		50.00	
SY126177	17.00	71.00	24.00	25.00	13.00	14.00	48.00	
SY126180	17.00	74.00	23.00	25.00	11.00	9.00	52.00	
SY126178	34.00	92.00	23.00	25.00	14.00	14.00	70.00	
SY126174	36.00	97.00	42.00	45.00	12.00	30.00	76.00	
SY126183	41.00	122.00	32.00	45.00	15.00	30.00	86.00	

S04 ▼



	B1	B4	D1	D4	D6	H2	C1	TA1
SY126185	16.00	105.00	42.00	32.00	15.00	22.00	76.00	
SY126186	18.00	86.00	47.00	36.00		31.00	59.00	M16

⚠ CA PROP 65 WARNING: Cancer/Reproductive Harm www.p65warnings.ca.gov

Taper Rollers Rodamientos Cónicos Rouleaux Coniques



Standard


	Industry #	Description	I.D."	O.D."	Width" ▼	Radius
SY43384	A6157	Cup		1.574	0.375	0.046
SY42238	07196	Cup		1.969	0.375	0.040
SY40784	L44610	Cup		1.980	0.420	0.046
SY43385	A6075	Cup	0.750		0.439	0.040
SY42211	LM67010	Cup		2.328	0.465	0.046
SY42347	10790S	Barrel cone	0.898	1.516	0.472	
SY126202	A6075/A6157	Cup & cone	0.750	1.574	0.473	
SY47412	LM11910	Cup		1.781	0.475	0.046
SY42133	15520	Cup		2.250	0.531	0.062
SY42017	LM78310A	Cup		2.440	0.535	0.060
SY47413	M12610	Cup		1.969	0.550	0.046
SY42205	LM48510	Cup		2.563	0.550	0.046
SY43459	LM29748-902A1	Assembly cup/cone/spacers	1.500	2.563	0.550	
SY36596	L44643/L44610	Cup & cone	1.000	1.980	0.560	
SY126236	L45449/L45410	Cup & cone	1.142	1.980	0.560	
SY99521	07100	Cone	1.00		0.561	0.040
SY42225	09195	Cup		1.938	0.563	0.046
SY47422	15245	Cup		2.441	0.563	0.046
SY940690	LM11749	Cone	0.688		0.575	0.050
SY29208	L44643	Cone	1.000		0.580	0.046
SY47443	L44649	Cone	1.063		0.580	0.140
SY42246	LM501310	Cup		2.891	0.580	0.031
SY47414	13621	Cup		2.717	0.594	0.093
SY43634	LM603011	Cup		3.063	0.594	0.031
SY40736	07000LA	Cone w/ seal	1.00		0.600	
SY52814	LM11949/LM11910	Cup & cone	0.750	1.781	0.610	
SY80596	LM12749/LM12710	Cup & cone	0.865	1.781	0.610	0.050
SY41255	LM102910	Cup		2.891	0.620	0.030
SY42134	37625	Cup	6.250		0.625	0.125
SY47423	15250	Cup		2.500	0.625	0.046
SY47416	14274	Cup		2.717	0.625	0.125
SY42208	16284	Cup		2.844	0.625	0.046
SY47763	362	Cup		3.543	0.625	0.078
SY1210632	382A	Cup		3.813	0.625	
SY39365	LM104911	Cup		3.250	0.650	0.050
SY47395	362A	Cup		3.500	0.650	0.046
SY40708	LM11949	Cone	0.750		0.655	0.046
SY47445	M86610	Cup		2.531	0.656	0.062
SY42210	LM67048	Cone	1.250		0.660	0.275
SY41939	LM67048/LM67010	Cup & cone	1.250	2.328	0.660	

⚠ CA PROP 65 WARNING: Cancer/Reproductive Harm www.p65warnings.ca.gov

Taper Rollers Rodamientos Cónicos Rouleaux Coniques

Standard


	Industry #	Description	I.D."	O.D."	Width" ▼	Radius
SY42813	LM67000LA	Cone w/ seal	1.250		0.660	
SY38565	L68149	Cone	1.378		0.660	0.140
SY42016	LM78349	Cone	1.378		0.669	0.140
SY126223	15580	Cone	1.063		0.687	0.140
SY47425	18790	Cup & cone	2.000		0.687	0.140
SY126206	15580/15520	Cup & cone	1.063	2.250	0.687	
SY42213	02420	Cup		2.687	0.687	0.062
SY38730	M88010	Cup		2.687	0.687	0.062
SY38405	24720	Cup		3.00	0.688	0.030
SY42130	15578	Cone	1.00		0.688	0.050
SY126235	LM300849/LM300811	Cup & cone	1.614	2.677	0.689	
SY52104	LM48548/LM48510	Cup & cone	1.375	2.563	0.710	
SY41312	15123/15245	Cup & cone	1.250	2.441	0.715	
SY38508	LM29749	Cone	1.500		0.720	0.090
SY38509	LM48500LA	Cone (seal assembly)	1.375		0.720	0.275
SY47444	LM48548	Cone	1.375		0.720	0.275
SY23478	LM67049A/LM67010	Cup & cone	1.250	2.328	0.728	
SY47398	394A	Cup		4.331	0.741	0.046
SY30300	LM806649	Cone	2.125		0.750	0.090
SY42224	09067	Cone	0.750		0.750	0.046
SY47421	15123	Cone	1.250		0.750	0.275
SY38244	2631	Cup		2.615	0.750	0.046
SY47432	25821	Cup		2.875	0.750	0.031
SY126232	25820	Cup		2.875	0.750	0.093
SY47401	2720	Cup		3.000	0.750	0.125
SY47434	26822	Cup		3.125	0.750	0.031
SY47428	25520	Cup		3.265	0.750	0.031
SY47437	29620	Cup		4.437	0.750	0.125
SY126216	M12600LA/M12610	Cup & cone	0.844	1.969	0.765	
SY38423	28622	Cup		3.844	0.766	0.031
SY77759	U-199-90010	Cup & cone	1.181	2.284	0.768	
SY126196	LM102949/LM102910	Cup & cone	1.781	2.891	0.770	
SY36539	14124	Cone			0.771	0.031
SY23419	14130	Cone	1.313		0.771	0.140
SY126234	14138A	Cone	1.375		0.771	0.140
SY51451	14139	Cone	1.377		0.771	0.046
SY42247	LM501349	Cone	1.625		0.780	0.140
SY41256	LM102949	Cone	1.781		0.780	0.140
SY52742	LM501349/LM501310	Cup & cone	1.625	2.891	0.780	
SY43635	LM603049	Cone	1.781		0.781	0.140
SY43386	HM88610	Cup		2.844	0.781	0.093
SY41247	12580	Cone	0.813		0.781	0.060
SY43389	14124/14274	Cup & cone	1.250	2.717	0.781	
SY52107	14130/14274	Cup & cone	1.313	2.717	0.781	
SY126189	14139/14276D	Cup & cone	1.377	2.717	0.781	

 CA PROP 65 WARNING: Cancer/Reproductive Harm www.p65warnings.ca.gov

Taper Rollers Rodamientos Cónicos Rouleaux Coniques

Standard


	Industry #	Description	I.D."	O.D."	Width" ▼	Radius
SY47435	28521	Cup		3.625	0.781	0.031
SY46137	27620	Cup		4.937	0.781	0.062
SY47451	M802011	Cup		3.250	0.795	0.130
SY940495	LM48548XT/11A-TX	Cup & cone	1.375	2.563	0.800	0.140
SY47418	15100	Cone	1.000		0.813	0.140
SY126225	15101	Cone	1.000		0.813	0.031
SY42212	16150	Cone	1.500		0.813	0.140
SY23413	15100/15250	Cup & cone	1.000	2.500	0.813	
SY126218	2520	Cup		2.615	0.813	0.125
SY41311	16150/16284	Cup & cone	1.500	2.844	0.813	
SY42156	2924	Cup		3.346	0.813	0.046
SY52088	368A/362A	Cup & cone	2.000	3.500	0.813	
SY41310	387/382A	Cup & cone	2.250	3.813	0.827	
SY47446	M86649	Cone	1.187		0.844	0.062
SY26954	M86649/M86610	Cup & cone	1.187	2.531	0.844	
SY43409	42584	Cup		5.844	0.844	0.120
SY940691	37425	Cone	4.250		0.844	0.140
SY41636	37431	Cone	4.313		0.844	0.140
SY126195	LM104949/LM104911	Cup & cone	2.000	3.250	0.850	
SY47397	387A	Cone	2.250		0.864	0.014
SY940498	395S	Cone	2.625		0.866	0.140
SY39356	395A	Cone	2.625		0.866	0.030
SY940692	390A	Cone	2.500		0.866	0.060
SY126237	399A	Cone	2.687		0.866	0.093
SY42070	399AS	Cone	2.687		0.866	0.203
SY32508	399AS/394A	Cup & cone	2.687	4.331	0.866	
SY940617	02475/02420	Cup & cone	1.250	2.688	0.875	0.140
SY38402	493	Cup		5.375	0.875	0.130
SY82274	2877/2820	Cup & cone	1.375	2.875	0.875	0.140
SY39129	M88040	Cone	1.125		0.875	0.090
SY42141	02475	Cone	1.250		0.875	0.140
SY47766	M88048	Cone	1.313		0.875	0.031
SY126230	02877	Cone	1.375		0.875	0.140
SY47396	368A	Cone	2.000		0.875	0.140
SY43982	LM104949	Cone	2.000		0.875	0.140
SY47764	368S	Cone	2.031		0.875	0.078
SY41331	M88048/M88010	Cup & cone	1.313	2.687	0.875	
SY43646	25523	Cup		3.265	0.875	0.093
SY41723	368S/362	Cup & cone	2.031	3.543	0.875	
SY1237385	HM89410	Cup		3.00	0.90	0.130
SY82858	HM89411	Cup		3.000	0.906	0.031
SY126198	37431/37625	Cup & cone	4.313	6.250	0.906	
SY47427	24780	Cone	1.625		0.906	0.140
SY47453	HM804810	Cup		3.750	0.906	0.130
SY126205	2690/2631	Cup & cone	1.156	2.615	0.937	

 CA PROP 65 WARNING: Cancer/Reproductive Harm www.p65warnings.ca.gov

Taper Rollers Rodamientos Cónicos Rouleaux Coniques

Standard


	Industry #	Description	I.D."	O.D."	Width" ▼	Radius
SY126193	25877/25821	Cup & cone	1.375	2.875	0.937	
SY126231	25878/25820	Cup & cone	1.375	2.875	0.937	
SY52668	3420	Cup		3.125	0.937	0.125
SY32261	26882/26822	Cup & cone	1.625	3.125	0.937	
SY126194	25590/25520	Cup & cone	1.796	3.383	0.937	
SY47405	3720	Cup		3.672	0.937	0.125
SY37773	3920	Cup		4.437	0.937	0.125
SY42187	39520	Cup		4.437	0.937	0.125
SY38401	3525	Cup		3.438	0.938	0.130
SY38397	33462	Cup		4.625	0.938	0.130
SY38422	28682	Cone	2.250		0.969	0.140
SY47433	25877	Cone	1.375		0.969	0.062
SY126233	25878	Cone	1.375		0.969	0.140
SY126217	28678	Cone	2.000		0.969	0.140
SY126203	28584/28521	Cup & cone	2.063	3.625	0.969	
SY126192	28678/28622	Cup & cone	2.000	3.844	0.969	
SY29131	395LA	Cone	2.687		0.970	
SY126219	2582	Cone	1.250		0.998	0.140
SY47447	HM88649	Cone	1.375		1.000	0.093
SY43387	HM88648	Cone	1.406		1.000	0.140
SY126229	26880	Cone	1.563		1.000	0.062
SY42131	26882	Cone	1.625		1.000	0.140
SY39851	25584	Cone	1.771		1.000	0.062
SY47431	25590	Cone	1.796		1.000	0.140
SY45662	28584	Cone	2.063		1.000	0.140
SY47438	29685	Cone	2.875		1.000	0.140
SY30291	27691	Cone	3.281		1.000	0.250
SY126199	2582/2520	Cup & cone	1.250	2.615	1.000	
SY126207	25584/25520	Cup & cone	1.771	3.265	1.000	
SY126190	2984/2924	Cup & cone	1.813	3.346	1.000	
SY53225	29685/29620	Cup & cone	2.875	4.437	1.000	
SY39723	LM814849/LM814810	Cup & cone	3.063	4.625	1.000	
SY47430	25580	Cone	1.750		1.000	0.140
SY38771	29675	Cone	2.750		1.000	0.060
SY47436	28985	Cone	2.375		1.000	0.140
SY39864	2690	Cone	1.156		1.001	0.140
SY42128	2984	Cone	1.813		1.008	0.140
SY47402	2780	Cone	1.437		1.010	0.062
SY47403	2788	Cone	1.500		1.010	0.140
SY47452	M802048	Cone	1.625		1.010	0.140
SY47404	3789	Cone	1.563		1.010	0.140
SY38455	47620	Cup		5.250	1.031	0.125
SY126197	M802048/M802011	Cup & cone	1.625	3.250	1.045	
SY51296	14136A	Cone	1.375		1.052	0.031
SY45917	55200C	Cone	2.000		1.059	0.140

 CA PROP 65 WARNING: Cancer/Reproductive Harm www.p65warnings.ca.gov

Taper Rollers Rodamientos Cónicos Rouleaux Coniques

Standard

	Industry #	Description	I.D."	O.D."	Width" ▼	Radius
SY126214	25590/25523	Cup & cone	1.796	3.265	1.063	
SY38390	522	Cup		4.000	1.063	0.125
SY126238	532X	Cup		4.250	1.125	0.130
SY32119	572	Cup		5.512	1.125	0.130
SY38393	563	Cup		5.000	1.125	0.130
SY43815	HM89446	Cone	1.375		1.125	0.140
SY45920	33891	Cone	2.063		1.125	0.140
SY38504	HM903249	Cone	1.750		1.125	0.140
SY47765	HM89449	Cone	1.437		1.125	0.140
SY126191	42350/42584	Cup & cone	3.500	5.844	1.125	
SY35576	42350	Cone	3.500		1.141	0.120
SY78486	42375	Cone	3.750		1.141	0.120
SY45664	42381	Cone	3.813		1.41	0.140
SY126210	HM88547/HM88511	Cup & cone	1.313	2.875	1.156	
SY41339	HM89449/HM89411	Cup & cone	1.437	3.000	1.156	
SY53216	3478/3420	Cup & cone	1.375	3.125	1.156	
SY937570	HM804846	Cone	1.875		1.156	0.140
SY45113	HM803149	Cone	1.750		1.156	0.140
SY38715	HM804843	Cone	1.750		1.156	0.140
SY45665	495AX	Cone	3.000		1.172	0.250
SY36502	497	Cone	3.375		1.172	0.140
SY45918	498	Cone	3.313		1.172	0.140
SY36126	3478	Cone	1.375		1.172	0.140
SY47410	3982	Cone	2.500		1.183	0.140
SY45915	3984	Cone	2.625		1.183	0.140
SY23202	3994	Cone	2.625		1.183	0.218
SY41313	469N	Cone	2.250		1.187	
SY47442	39590	Cone	2.625		1.187	0.140
SY53207	3780/3720	Cup & cone	2.000	3.672	1.187	
SY51978	469/453X	Cup & cone	2.250	4.125	1.187	
SY71758	39590/39520	Cup & cone	2.625	4.437	1.187	
SY48178	3984/3920	Cup & cone	2.625	4.437	1.187	
SY126201	3994/3920	Cup & cone	2.625	4.437	1.187	
SY940638	HM804846/HM804810	Cup & cone	1.875	3.750	1.188	0.140
SY940639	3984/3920	Cup & cone	2.625	4.438	1.188	0.140
SY47406	3780	Cone	2.000		1.193	0.140
SY937576	3775	Cone	2.000		1.193	0.030
SY54527	3586	Cone	1.781		1.216	0.140
SY126215	47686	Cone	3.250		1.313	0.140
SY48175	47686/47620	Cup & cone	3.250	5.250	1.313	
SY126208	529/522	Cup & cone	2.000	4.000	1.375	
SY51290	529	Cone	2.000		1.420	0.031
SY32121	580	Cone	3.250		1.421	0.140
SY54788	52400	Cone	4.000		1.422	0.140
SY940629	567	Cone	2.875		1.424	0.140

 CA PROP 65 WARNING: Cancer/Reproductive Harm www.p65warnings.ca.gov


Taper Rollers Rodamientos Cónicos Rouleaux Coniques

Standard

	Industry #	Description	I.D."	O.D."	Width" ▼	Radius
SY81405	HM813841	Cone	2.375		1.438	0.140
SY126240	539	Cone	2.125		1.455	0.140
SY940501	48290	Cone	5.000		1.500	0.140
SY51452	14276D	Cup		2.717	1.500	0.031
SY36190	HM212046	Cone	2.500	0	1.510	0.140

Metric

	Industry #	Description	Width mm ▼	I.D. mm	O.D. mm	Radius mm
SY940491	99600/99100	Cup & cone	6.000	10.000	2.625	0.280
SY126211	JL69310	Cup	13.50		63.00	1.27
SY126241	32005JR	Cup & cone	15.00	25.00	47.00	
SY52636	30205	Cup & cone	16.25	25.00	52.00	
SY126212	JL69649	Cone	17.00	38.00		
SY126209	JL69349/JL69310	Cup & cone	17.00	38.00	63.00	
SY40787	JLM104910	Cup	17.00		82.00	0.51
SY937598	4T-320/32X	Cup & cone	17.00	32.00	58.00	
SY52015	30206	Cup & cone	17.25	30.00	62.00	
SY52526	32007X	Cup & cone	18.00	35.00	62.00	
SY940631	Y33205	Cup	18.00		52.00	1.02
SY31337	31305	Cup & cone	18.25	25.00	62.00	
SY935610	30305	Cup & cone	18.25	25.00	62.00	1.52
SY38804	30207	Cup & cone	18.50	35.00	72.00	
SY43377	JLM506810	Cup	18.50		90.00	0.51
SY47450	JLM710910	Cup	18.50		105.00	1.02
SY32738	32008	Cup & cone	19.00	40.00	68.00	
SY40783	JLM714110	Cup	19.00		115.00	2.54
SY940618	32008	Cup & cone	19.00	40.00	68.00	1.02
SY40789	JLM508710	Cup	19.00		95.00	2.54
SY968421	32205	Cup & cone	19.25	25.00	52.00	
SY940600	U-199/U160L	Cup & cone	19.50	30.00	58.00	2.30
SY48154	30208	Cup & cone	20.00	40.00	80.00	
SY100690	32010X	Cup & cone	20.00	50.00	80.00	
SY80979	32009	Cup & cone	20.00	45.00	75.00	1.02
SY940693	JL819349/JL819310	Cup & cone	20.00	95.00	135.00	5.08
SY43988	JLM813010	Cup	20.50		110.00	2.54
SY43983	Y33108	Cup	20.50		75.00	1.52
SY47267	30209	Cup & cone	20.75	45.00	85.00	
SY52016	30306	Cup & cone	21.00	30.00	72.00	
SY937574	JLM104948-N0000	Cone w/ sleeve	21.50	50.00		3.05
SY40788	JLM104948	Cone	21.50	50.00		3.05
SY52155	JLM104948/JLM104910	Cup & cone	21.50	50.00	82.00	
SY940636	30210	Cup & cone	21.75	50.00	90.00	1.52
SY41809	33205	Cup & cone	22.00	25.00	52.00	
SY937572	395S/394A	Cup & cone	22.00	67.00	110.00	3.56

 CA PROP 65 WARNING: Cancer/Reproductive Harm www.p65warnings.ca.gov

Taper Rollers Rodamientos Cónicos Rouleaux Coniques

Metric

	Industry #	Description	Width mm ▼	I.D. mm	O.D. mm	Radius mm
SY937567	32016-Cup	Taper cup	22.00		125.00	1.52
SY940630	X33205	Cone	22.00	25.00		1.02
SY107712	30307	Cup & cone	23.00	35.00	80.00	
SY43378	JLM506849	Cone	23.00	55.00		1.52
SY43632	JLM710949	Cone	23.00	65.00		3.05
SY24753	JM205110	Cup	23.00		90.00	2.54
SY107727	30308	Cup & cone	23.00	40.00	90.00	
SY31450	JLM506849/JLM506810	Cup & cone	23.00	55.00	90.00	
SY47270	32012	Cup & cone	23.00	60.00	95.00	
SY47440	30211	Cup & cone	23.00	55.00	100.00	
SY48129	32013	Cup & cone	23.00	65.00	100.00	
SY940717	JLM506849A	Taper cup	23.00	55.00		3.56
SY43379	JM207010	Cup	23.50		95.00	2.54
SY126204	JLM710949/JLM710910	Cup & cone	24.00	65.00	105.00	
SY48130	30212	Cup & cone	24.00	60.00	110.00	
SY40774	JM716610	Cup	24.00		130.00	2.54
SY40790	JLM508748	Cone	24.00	60.00		5.08
SY46506	32207 (cone only)	Cone	24.50	35.00		
SY47570	32207	Cup & cone	24.50	35.00	72.00	
SY40793	JLM813049	Cone	25.00	70.00		1.02
SY40782	JLM714149	Cone	25.00	75.00		3.05
SY48153	32208	Cup & cone	25.00	40.00	80.00	
SY23636	32210	Cup & cone	25.00	50.00	90.00	
SY71759	JLM714149/JLM714110	Cup & cone	25.00	75.00	115.00	
SY48177	30213JR	Cup & cone	25.00	65.00	120.00	
SY52018	32014	Cup & cone	25.00	70.00	110.00	
SY940641	33206	Cup & cone	25.00	30.00	62.00	1.02
SY107710	X33108	Cone	26.00	40.00		1.52
SY107743	30214	Cup & cone	26.50	70.00	125.00	
SY35561	JM822010	Cup	26.50		165.00	3.30
SY51429	33013	Cup & cone	27.00	65.00	100.00	
SY48128	30309	Cup & cone	27.25	45.00	100.00	
SY47292	30215	Cup & cone	27.25	75.00	22.00	2.03
SY126228	31309	Cup & cone	27.50	45.00	100.00	
SY126239	30309DJR	Cup & cone	27.50	45.00	100.00	
SY24754	JM205149	Cone	28.00	50.00		3.05
SY940637	JM205149/JM205110	Cup & cone	28.00	50.00	90.00	3.05
SY48173	30216	Cup & cone	28.25	80.00	140.00	2.54
SY40771	JM515610	Cup	28.50		130.00	2.54
SY43380	JM207049	Cone	29.00	55.00		1.52
SY40773	JM716649	Cone	29.00	85.00		3.05
SY51797	32016	Cup & cone	29.00	80.00	125.00	
SY937578	JM716648	Cone	29.00	85.00		6.10
SY937566	32016-Cone	Cone	29.00	80.00		1.52
SY940632	32016	Cup & cone	29.00	80.00	125.00	1.52

 CA PROP 65 WARNING: Cancer/Reproductive Harm www.p65warnings.ca.gov

Taper Rollers Rodamientos Cónicos Rouleaux Coniques

Metric

	Industry #	Description	Width mm ▼	I.D. mm	O.D. mm	Radius mm
SY32617	30310	Cup & cone	29.25	50.00	110.00	
SY38539	JM714249	Cone	29.50	75.00		3.05
SY45353	32212	Cone	30.00	60.00	110.00	
SY126221	32212	Cup & cone	30.00	60.00	110.00	
SY126226	33287	Cone	30.16	73.00		3.56
SY87382	30310D	Cup & cone	30.50	50.00	84.00	
SY107717	33014	Cup & cone	31.00	70.00	110.00	
SY52020	33015	Cup & cone	31.00	75.00	115.00	1.52
SY87378	30311	Cup & cone	31.50	55.00	120.00	2.54
SY940634	30311	Cup & cone	31.50	55.00	120.00	2.54
SY940500	T4CB140-P6X	Cup & cone	31.60	140.00	195.00	
SY937580	JH307710	Cup	32.00		110.00	
SY940728	33208	Cup & cone	32.00	40.00	80.00	
SY940633	32020X	Cup & cone	32.00	100.00	150.00	2.03
SY52551	32018	Cup & cone	32.00	90.00	140.00	2.03
SY48174	33012JRRS	Cup & cone	32.40	60.00	95.00	
SY1237386	32213	Cup & cone	32.75	65.00	120.00	
SY51838	32307	Cup & cone	33.00	35.00	80.00	
SY126224	32214	Cup & cone	33.50	70.00	125.00	
SY126222	32215	Cup & cone	33.50	75.00	130.00	
SY40772	JM515649	Cone	34.00	80.00	123.00	3.05
SY937605	33211	Cup & cone	35.00	55.00	100.00	2.03
SY38502	JM822049	Cone	35.00	110.00		3.05
SY47571	32216	Cup & cone	35.50	80.00	140.00	
SY126213	33016	Cup & cone	36.00	80.00	125.00	
SY940635	30220	Cup & cone	37.00	100.00	180.00	3.05
SY126227	32309	Cup & cone	38.50	45.00	100.00	
SY937579	JH307749	Cone	39.00	55.00		3.05

Needle Bearings Rodamientos de Agujas Roulement à Aiguilles



Standard

	Industry #	I.D." ▼	O.D."	Width"		Industry #	I.D." ▼	O.D."	Width"
SY126261	SCE-78	0.438	0.625	0.500	SY126257	BA1216	0.750	1.000	1.000
SY126298	BHA7870H	0.438	0.688	0.500	SY43437	HP93330NAH	0.750	1.165	1.875
SY45814	SCE129	0.750	1.000	0.563	SY38443	S-1412	0.875	1.125	0.750
SY45813	RC121610	0.750	1.000	0.625	SY41472	WJ141816	0.875	1.125	1.000
SY126255	SCE1211P	0.750	1.000	0.688	SY47486	MR14	0.875	1.375	1.000
SY36925	M12121	0.750	1.000	0.750	SY36259	SRF35SS	0.875	1.750	0.745
SY47477	BA1212ZOH	0.750	1.000	0.750	SY43827	B16120H	1.000	1.250	0.750
SY126260	JT1213	0.750	1.000	0.813	SY43675	M161610H	1.000	1.250	1.000

CA PROP 65 WARNING: Cancer/Reproductive Harm www.p65warnings.ca.gov


Needle Bearings Rodamientos de Agujas Roulement à Aiguilles

Standard

	Industry #	I.D." ▼	O.D."	Width"		Industry #	I.D." ▼	O.D."	Width"
SY47479	B1616OH	1.000	1.250	1.000	SY937577	BCH2020	1.250	1.625	1.250
SY39405	SRF40SS	1.000	2.000	1.000	SY45086	BCH2020	1.250	1.625	1.250
SY99-00531	PA96540	1.000	2.000	2.500	SY47487	BR202816	1.250	1.750	1.000
SY41453	C182416	1.125	1.500	1.000	SY47483	NCS2020	1.250	1.750	1.250
SY42142	SRF35	1.125	1.750	0.750	SY126284	BH2212	1.375	1.750	0.750
SY48703	SCE188	1.152	1.380	0.495	SY47482	BH2216	1.375	1.750	1.000
SY126262	B208	1.250	1.500	0.500	SY47481	SCE2420	1.500	1.875	1.250
SY47480	B2020	1.250	1.500	1.250	SY78019	SRF60	1.625	3.000	1.240
SY126268	WJ202612	1.250	1.625	0.750	SY126289	SJ7315SS	1.774	2.311	1.249

Metric


	Industry #	I.D. mm ▼	O.D. mm	Width mm		Industry #	I.D. mm ▼	O.D. mm	Width mm
SY126256	K12X16X13TN	12.00	16.00	13.00	SY38457	NTA1625	25.45	39.42	1.98
SY43430	B910	14.29	19.05	15.88	SY48134	HK2526	25.50	32.00	26.00
SY42269	B912	14.29	19.05	19.05	SY48219	BHA1612Z	25.50	33.50	19.00
SY126278	HK1614RS	16.00	22.00	14.00	SY51846	BHTM2620A	26.00	34.00	20.00
SY38474	BCH06604	17.02	23.83	15.88	SY126259	HPA-94520	26.00	37.50	30.50
SY126288	NTB1831	18.00	31.00	2.00	SY126274	HK28X35X25	28.00	35.00	25.00
SY126254	B126	19.05	25.40	9.53	SY107730	HK28X35X30	28.00	35.00	30.00
SY126249	93324	19.05	28.58	36.91	SY107748	7E-HK-S28X35X33	28.00	35.00	33.00
SY126264	HK2020	20.00	26.00	20.00	SY107726	BM283930A	28.00	39.00	30.00
SY126297	TA2015Z	20.00	27.00	15.00	SY51819	28BHM3730	28.00	37.00	30.00
SY126281	HK2216	22.00	28.00	16.00	SY52550	TLA283525	28.00	35.00	25.00
SY126273	HMK2220	22.00	28.00	20.00	SY126263	B188	28.58	34.93	12.70
SY126275	KT222912	22.00	29.00	11.70	SY42453	B1816	28.58	34.93	25.40
SY126272	HMK2225	22.00	29.00	25.00	SY126242	BAM1816	28.58	34.93	25.40
SY82928	TA2230	22.00	29.00	30.00	SY38962	BH1816	28.58	38.10	25.40
SY42384	SCE146	22.23	28.58	9.53	SY126246	K30X35X20A	30.00	35.00	20.80
SY42282	SCE148	22.23	28.58	12.70	SY126276	K30X35X24	30.00	35.00	23.60
SY47478	B1416OH	22.23	28.58	25.40	SY126266	K30X35X27	30.00	35.00	27.00
SY45668	M15161	23.81	30.16	25.40	SY48226	HK3020	30.00	37.00	20.00
SY48704	F96760	24.00	30.00	16.00	SY48135	HK3026	30.00	37.00	26.00
SY126295	K25X30X25.6	25.00	30.00	25.60	SY107713	HK30X37X30RS	30.00	37.00	30.00
SY126280	HK2530.2RS	25.00	32.00	30.00	SY126286	KT303824	30.00	38.00	24.00
SY107714	7E-HK-S25X32X33	25.00	32.00	33.00	SY126293	HK30X38X32	30.00	38.00	32.00
SY52022	HMK2530D	25.00	33.00	30.00	SY52851	HMK3030	30.00	40.00	30.00
SY52534	NK25X33X30PX2	25.00	33.00	30.00	SY126258	YB1910	30.16	38.10	15.88
SY126285	KT253524	25.00	35.00	23.30	SY126301	KT323723	32.00	37.00	23.00
SY53171	HMK2520	25.00	33.00	20.00	SY45689	BCE2020OH	32.00	38.10	31.75
SY36827	BCH1612	25.40	33.34	19.05	SY53168	HKS323934	32.00	39.00	34.00
SY40294	WJ162112	25.40	33.34	19.05	SY126291	HKS32X39X37	32.00	39.00	37.00
SY126294	JH1616	25.40	33.34	25.40	SY126267	HK32X40X32	32.00	40.00	32.00
SY41397	WJ162116	25.40	33.34	25.40	SY1220047	BH2020OH	32.00	41.28	31.75
SY126250	SJ7193	25.40	38.10	19.05	SY36235	BR202820	32.00	44.45	31.75

 CA PROP 65 WARNING: Cancer/Reproductive Harm www.p65warnings.ca.gov

Needle Bearings Rodamientos de Agujas Roulement à Aiguilles

Metric

	Industry #	I.D. mm ▼	O.D. mm	Width mm		Industry #	I.D. mm ▼	O.D. mm	Width mm
SY44210	SRF45SS	32.00	57.15	25.27	SY52021	TA4025Z	40.00	50.00	25.00
SY126277	K35X40X27	35.00	39.50	27.00	SY71777	NB40X50X25B	40.00	50.00	25.00
SY45221	K35X40X17	35.00	40.00	16.75	SY126245	HK4030	40.00	50.00	30.00
SY107751	K35X40X25	35.00	40.00	25.00	SY126299	TA4040	40.00	50.00	40.00
SY23634	NK3530	35.00	40.00	30.00	SY41578	SCE2610	41.28	50.80	15.88
SY126244	K35X40X30	35.00	40.00	30.70	SY40692	SCE2620	41.28	50.80	31.75
SY126253	B2212	35.00	41.28	19.05	SY38090	K42X47X17	42.00	47.00	17.00
SY126252	SCE228	35.00	41.28	12.70	SY43426	SJ7304	42.86	57.15	25.40
SY126296	HK3512	35.00	42.00	12.00	SY38431	B-2816	44.45	53.98	25.40
SY32736	K35X42X30	35.00	42.00	29.70	SY52726	BAM2824	44.45	53.98	38.10
SY41742	BH22100H	35.00	44.45	15.88	SY44245	SJ7315	44.45	58.74	31.75
SY105811	TA3512	35.00	45.00	12.00	SY42240	BA2824	44.50	54.00	38.00
SY52653	AXK3552	35.00	52.00	2.00	SY126265	K45X50X13	45.00	49.50	12.50
SY1244496	HMK3530	35.00	45.00	30.00	SY126292	F4526	45.00	52.00	26.00
SY51820	BHM3518	35.00	45.00	18.00	SY126283	K50X58X25	50.00	58.00	25.00
SY32735	K35X42X20	35.50	41.50	19.50	SY126279	K50X58X30	50.00	58.00	29.70
SY43427	NCS2420	38.10	52.39	31.75	SY126269	K50X55X20	50.40	54.20	19.65
SY36234	SRF55SS	38.10	69.85	31.70	SY126243	BR324120	50.80	65.09	31.75
SY42524	K38X43X17B	38.80	42.80	16.60	SY43375	NTA3244	51.00	69.40	2.00
SY32147	K40X45X17	40.00	45.00	16.50	SY43374	B3416	53.98	63.50	38.10
SY33346	K40X45X27	40.00	45.00	26.70	SY126251	SJ8407	57.15	76.20	44.45
SY43889	HK4020	40.00	47.00	20.00	SYLCL2002	NTA3648	57.50	76.00	2.00
SY126290	HK4026	40.00	47.00	26.00	SY126271	NA4917	100.00	120.00	35.00
SY126287	HMK4040	40.00	47.00	40.00					

 CA PROP 65 WARNING: Cancer/Reproductive Harm www.p65warnings.ca.gov